

The Lady of the Lake

ARTHUR (CON'T)

WE MUST BE LONELY SIDE BY SIDE
IT'S A PERFECT WAY TO HIDE

KNIGHTS

WE'RE ALL ALONE

ARTHUR

WE'RE ALL ALONE

KNIGHTS

YES, ALL ALONE

ARTHUR

SO ALL ALONE
EACH BY OURSELVES
WE'RE ALL ALONE

#26 THE SONG THAT GOES LIKE THIS - REPRISE

(The LADY OF THE LAKE descends the stairs)

LADY OF THE LAKE

* But you're not alone Arthur. Haven't you noticed? I've been with you all the time. Who gave you the sword? Who made you King? Who welcomed you to Camelot? Who helped you off on your quest?

(ARTHUR realizing it was she.)

Sure, I've been offstage for far too long, but I am here to help you and I always have been.

ARTHUR

Patsy, I'm not alone.

PATSY

No, sir.

ARTHUR

The Lady of the Lake has been with me all the time.

LADY OF THE LAKE

And so has Patsy.

ARTHUR

Ah, yes, but... Patsy's family.

LADY OF THE LAKE

You see, Arthur dear, we're all here to help each other.

ARTHUR

Can you help me put on a Broadway show?

LADY OF THE LAKE

Yes. You're in a Broadway show.

(Sparkling stage effect. ARTHUR looks out at the audience.)

ARTHUR

Oh, my.

LADY OF THE LAKE

You've been in a Broadway show all the time.

ARTHUR

Oh. Who knew?

(To audience)

Are there any Jews here?

PATSY

The truth is, Sire, I'm Jewish.

ARTHUR

You are?

PATSY

Yes, Sire, on my mother's side.

ARTHUR

Well, why didn't you say so?

PATSY

Well, it's not the sort of thing you say to a heavily armed Christian.

ARTHUR

So now what?

LADY OF THE LAKE

Well, you have to finish the show. It is a musical, so you have to find the Grail and end with a wedding.

ARTHUR

Well, who could I possibly marry?

LADY OF THE LAKE

Well, it would have to be someone who loved you and cared for you enough to give you a sword, to make you King, to welcome you to Camelot, to help you off on your quest...

(ARTHUR is a little slow off the mark. PATSY whispers in his ear.)

ARTHUR

You?

LADY OF THE LAKE

Oh, that's an idea.

ARTHUR

But I thought you were a fairy.

LADY OF THE LAKE

Oh, no, that's Lancelot. Oh, you missed that scene. Anyway, Arthur, I'm as human as you are.

ARTHUR

And you would consent to be my bride?

LADY OF THE LAKE

Are you asking?

ARTHUR

Are you saying yes?

LADY OF THE LAKE

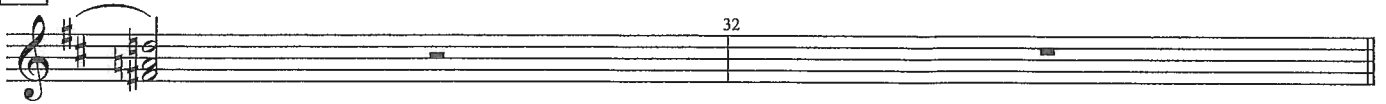
Oh, Arthur. *·

(They embrace. They lean in for a kiss and suddenly turn away to sing.)

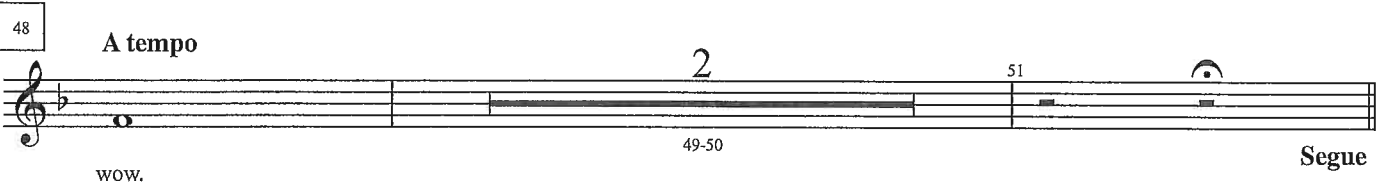
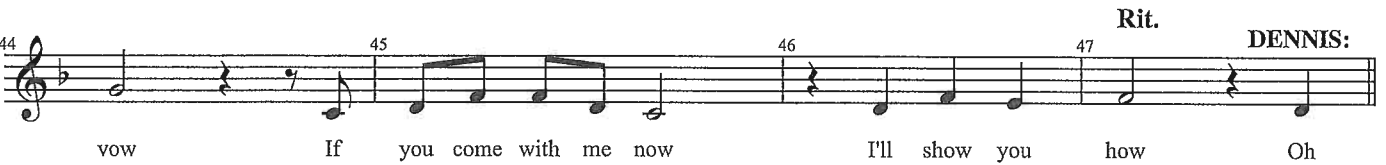
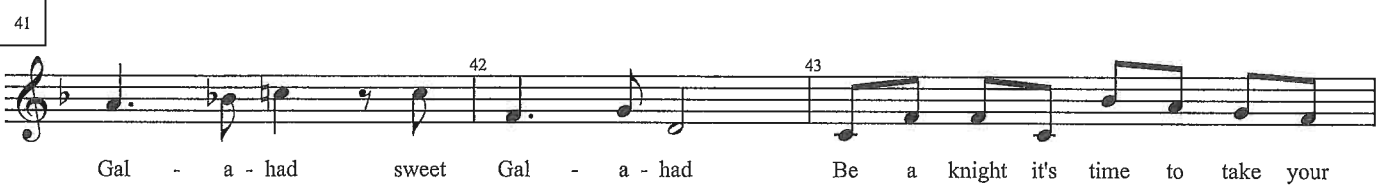
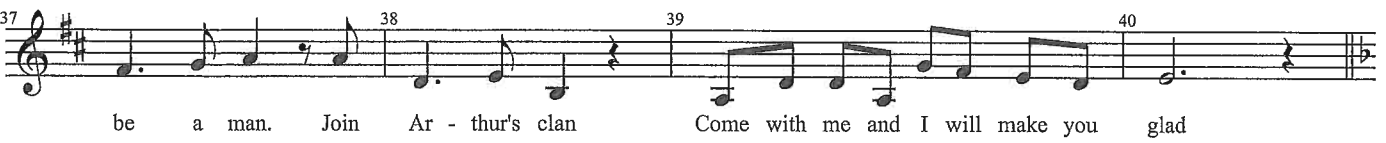
ARTHUR & LADY OF THE LAKE

TWICE IN EVERY SHOW
THERE COMES A SONG LIKE THIS
IT STARTS OFF SOFT AND LOW
AND ENDS UP WITH A KISS
OH THIS IS THE SCENE THAT ENDS LIKE THIS!

31 Twice as slow $\text{♩} = \text{♩}$



33 Poco più mosso
LADY OF THE LAKE:



25

DENNIS: **LADY:**

Now we're in to E That's aw-fully high for me

27 28 **BOTH:**

e - very-one can see We should have stayed in D For

29 30 31 32 **DENNIS:**

this is our song that goes like this I'm

33

LADY: 34 **DENNIS:**

feel - ing ve - ry proud You're sing - ing far too loud That's the

35 36 **LADY:**

way that this song goes You're stand - ing on my toes

37 **BOTH:** 38 39 40 **LADY:**

Sing - ing our song that goes like this I

41

DENNIS: 42 **LADY:**

can't be - lieve there's more It's far too long I'm sure That's the

43 44 **BOTH:**

trou - ble with this song It goes on and on and on For

45 46 47 48 **LADY:**

this is the song that is too long. We'll be

49

(LADY) DENNIS: 50 LADY:

sing - ing this till dawn You'll wish that you weren't born Let's

WOMEN:

Ah! Ah!

51 LADY: BOTH: 52

stop this damn re - frain Be - fore we go in - sane The

Ah!

Rall.

53 54 55 56 57

song al - ways ends like this! _____

ends like this _____ Segue

8a. — The Song That Goes — Playoff

TACET

9. — *Knighting of Galahad*

TACET

(To #12)

13 129-161.

Freely Solo: 78 I have to push the pram a lot. 79 80 **Giocoso**

83 **Meno mosso, Jazzy** 2 85 8 83-84 85-92

93 **Latiny-Vegas feel** (♩ = ♪) 9 93-101

102 **Stripper feel** 7 109 **Clunk! (onstage)** **Rit.** 110 110.1 → 111 102-108

112 **Lounge singer ballad** 2 112-113

114 **LADY OF THE LAKE:** 115 Once in ev' - ry show there comes a song like this.

116 117 It starts off soft and low and ends up with a kiss. Oh

118 119 120 121 where is the song that goes like this?

122 **Rit.** 7 129 **LADY:** 129.1 129.2 (To 130) 122-128 For this is the song that goes like

130 **Fast swing**
The Lady of the Lake does a crazy scat

Musical staff 130 with measure numbers 131, 132, 133 and slanted lines for notes.

134 *Arthur does a crazier scat*
MUSICAL STAFF 134
135 136 137
LADY:
They're

138
MUSICAL STAFF 138
139 140 141
ARTHUR:
Knights of the Round Ta - ble They

142
MUSICAL STAFF 142
143 144 145
LADY:
dance when e'er they're a - ble They're

146
MUSICAL STAFF 146
147 148
ARTHUR:
Knights. Not days but knights.

149
LADY/ARTHUR:
MUSICAL STAFF 149
150 151
Not dawn not dusk not late af - ter - noon but

152
MUSICAL STAFF 152
153 154
Knights of the Round ta - ble round

155
MUSICAL STAFF 155
156 157
ALL:
ta - ble round ta - ble round ta - ble round

158
MUSICAL STAFF 158
159 160 161
ta - ble round ta - ble round ta - ble round ta - ble

162 **Straight 8ths**
MUSICAL STAFF 162
3
163-165
Try your luck in Cam - e - lot!

165
MUSICAL STAFF 165
2
165.4
Run a - muck in Cam - e - lot! It